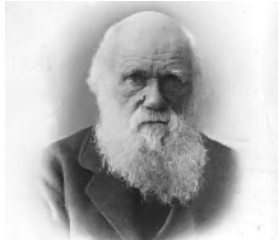
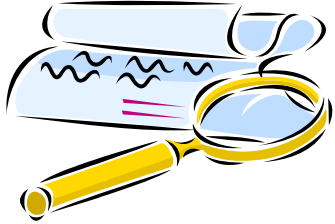


The Breakdown and Failure of Evolution



“If it could be demonstrated that any complex organ existed, which could not possibly have been formed by numerous, successive, slight modifications, my theory would absolutely break down.” (From *Origin of the Species*, by Charles Darwin, page 171. Mentor Books edition, 1962)



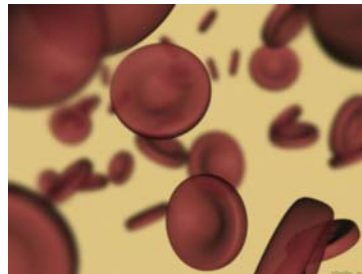
Charles Darwin clearly states that if an organism or system was found that was “composed of several well-matched, interacting parts that contribute to the basic function, wherein the removal of any one of the parts causes the system to effectively cease functioning”— then his theory has failed and is incorrect.

Michael Behe's molecular biochemical research has concluded that in fact on the molecular level Darwin's theory has indeed broken down.

Examples of Irreducibly Complex Systems



The Eye



Blood Clotting

The Biochemical Challenge to Evolution

